



# T8 Sensors and accessories

Add-on options for T8-DLX and T8-LTE environmental data radios

## HUMIDITY

Outside air Relative Humidity and Temperature probe with solar shield - factory installed



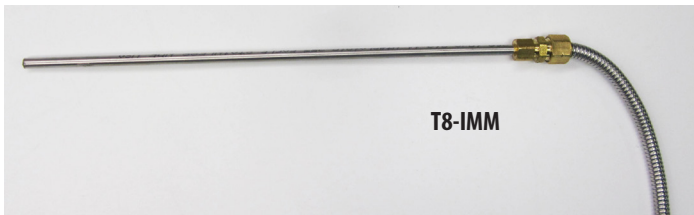
**-RHT**  
FACTORY INSTALLED  
(ORDER WITH T8)

Fully calibrated. Excellent long-term stability. Recovers from 100% saturation.

SPECIFICATIONS:	
<b>RANGE</b>	0 to 100%RH, -40 to 120°C
<b>RH ACCURACY</b>	+/-2%RH over 20-80%RH range
<b>TEMP ACCURACY</b>	+/-0.3°C over 0-60°C range
<b>OUTPUT</b>	I <sup>2</sup> C for use with T8 transceiver models only

## TEMPERATURE

Stainless steel, potted immersion probe with armored cable



**T8-IMM**

Stainless steel probe. Encapsulated sensor. Armored cable. Weatherproof.

SPECIFICATIONS:	
<b>THERMISTOR</b>	10k type 3 standard - other types available
<b>ACCURACY</b>	+/-0.2°C
<b>PROBE</b>	12 inches x 1/4" diam. Customization available.
<b>CABLE</b>	10 feet, 2-conductor, armored cable.

## SOIL TENSION

Vacuum sensor kit for use with popular soil tensiometers



**T8-VAC**

Easy retrofit to popular soil tensiometer tubes. Factory calibrated. Armored cable.

SPECIFICATIONS:	
<b>RANGE</b>	0-100kPa vacuum
<b>OUTPUT</b>	1-5 vdc (12vdc power supply)
<b>FITTING</b>	1/4" MNPT, brass.
<b>CABLE</b>	10 feet, 2-conductor, armored cable.

## WIND SPEED

Pulse to analog adapter kit for use with popular rotary cup anemometers



**T8-ANE**

Compact, weatherproof enclosure. Simple installation. Pre-configured conversion.

SPECIFICATIONS:	
<b>RANGE</b>	0.45 to 60 meters/second
<b>OUTPUT</b>	0-5 vdc (5-12vdc power supply)
<b>CONVERSION</b>	Internal: M/sec = (frequency x 0.79984)+0.45
<b>COMPATIBILITY</b>	For use with Met One™ 014MINI cup anemometer

## FLUID LEVEL

*Pressure transducer for liquid level measurement*



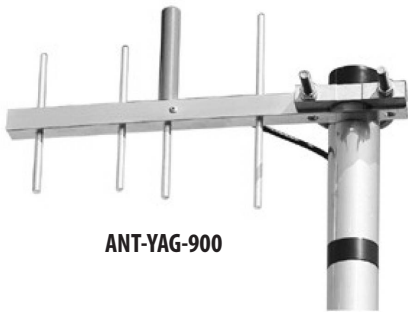
T8-LVL-[PSI]

*Rugged stainless construction. Submersible. Compatible with various liquids.*

SPECIFICATIONS:	
<b>RANGE</b>	Ranges available from 1 to 100 psi (2 to 230 feet)
<b>ACCURACY</b>	+/-0.25% BFSL
<b>SEALING</b>	IP68 - Submersible. 1/2" NPT conduit fitting at cable.
<b>OUTPUT</b>	1 to 5vdc (10 to 28vdc power)

## ANTENNAS

*Directional and Omni-directional options for improved performance*



ANT-YAG-900

SPECIFICATIONS:	
<b>TYPE</b>	Directional Yagi, 4-element
<b>GAIN</b>	6 dB
<b>CONNECTION</b>	N female with 3 ft. N to SMA adapter cable
<b>MOUNTING</b>	Includes U-bolt for pole mounting up to 2-1/8" pipe



ANT-OMN-900

SPECIFICATIONS:	
<b>TYPE</b>	Omni-directional wire whip
<b>GAIN</b>	3 dB
<b>CONNECTION</b>	17 ft. coax with SMA connector
<b>MOUNTING</b>	NMO. Includes angle bracket for surface mounting

## MOUNTING BRACKETS

*Kits for pole installation*

T8-PMK-LTE



T8-PMK-DLX



## ORDERING INFORMATION

PART #	DESCRIPTION
T8-VAC	Vacuum sensor kit for soil tensiometer
T8-IMM	Temperature sensing immersion probe w/armored cable
T8-ANE	Pulse to analog converter for cup anemometer
T8-LVL-[PSI]	Pressure transducer for liquid level measurement

PART #	DESCRIPTION
T8-PMK-LTE	Pole mounting kit for LTE model.
T8-PMK-DLX	Pole mounting kit for DLX model.
ANT-YAG-900	Directional long-range Yagi antenna kit w/mounting.
ANT-OMN-900	Omni-directional long-range whip antenna kit w/mounting.